

ABALONE AQUACULTURE



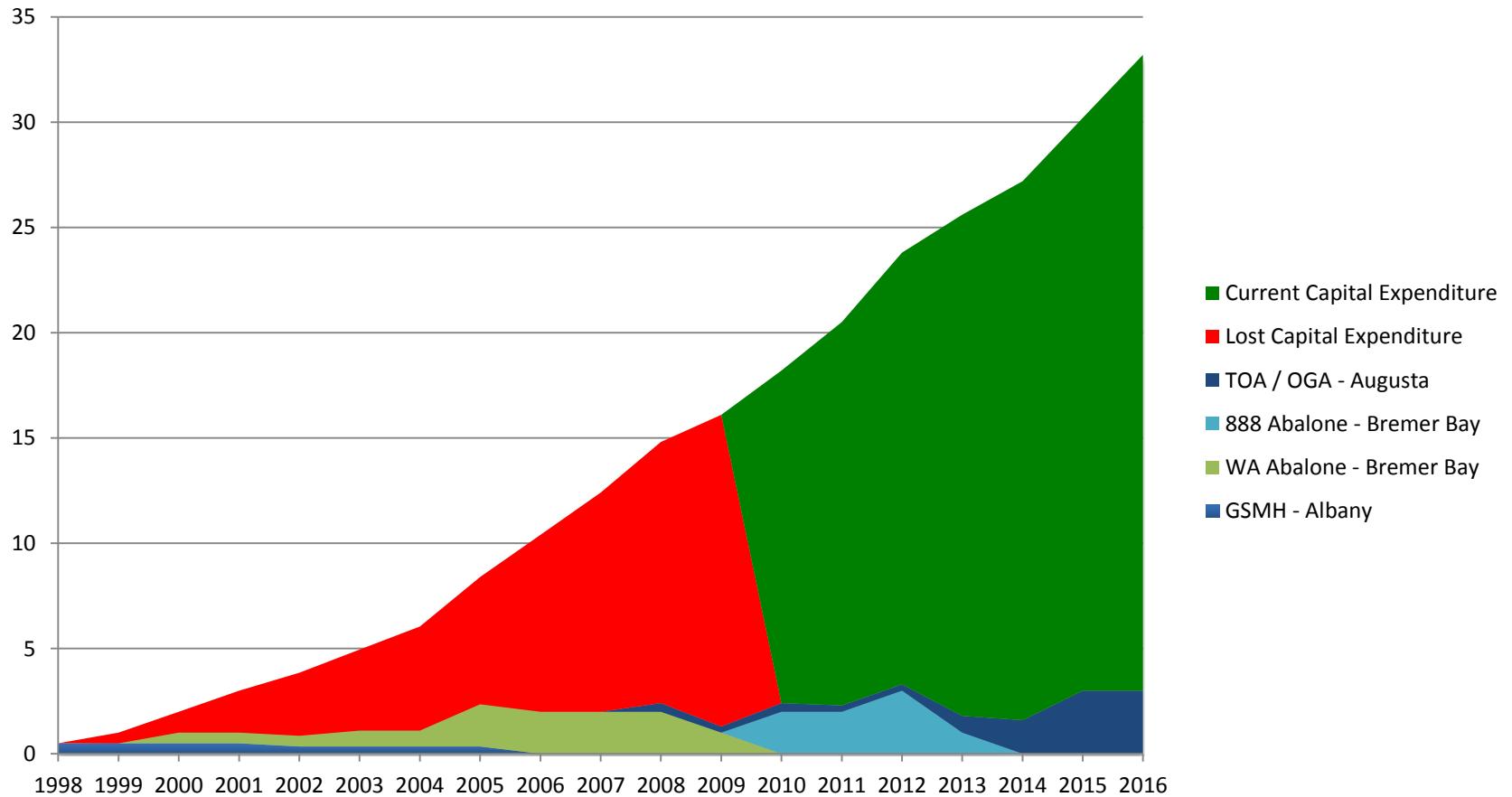
An Overnight Success?

Greenlip Abalone



- Main commercial species in WA usually selling between \$30-\$50/kg wholesale depending on size.
- 160t of whole in shell, Wild Caught in 2014 in WA. Reduced recently to 126t.
- Aquaculture activity in Augusta and Bremer Bay. Trials occurring in Esperance. Albany had the first hatchery but it was shut down in 2008.

Historical Investment



888 Abalone



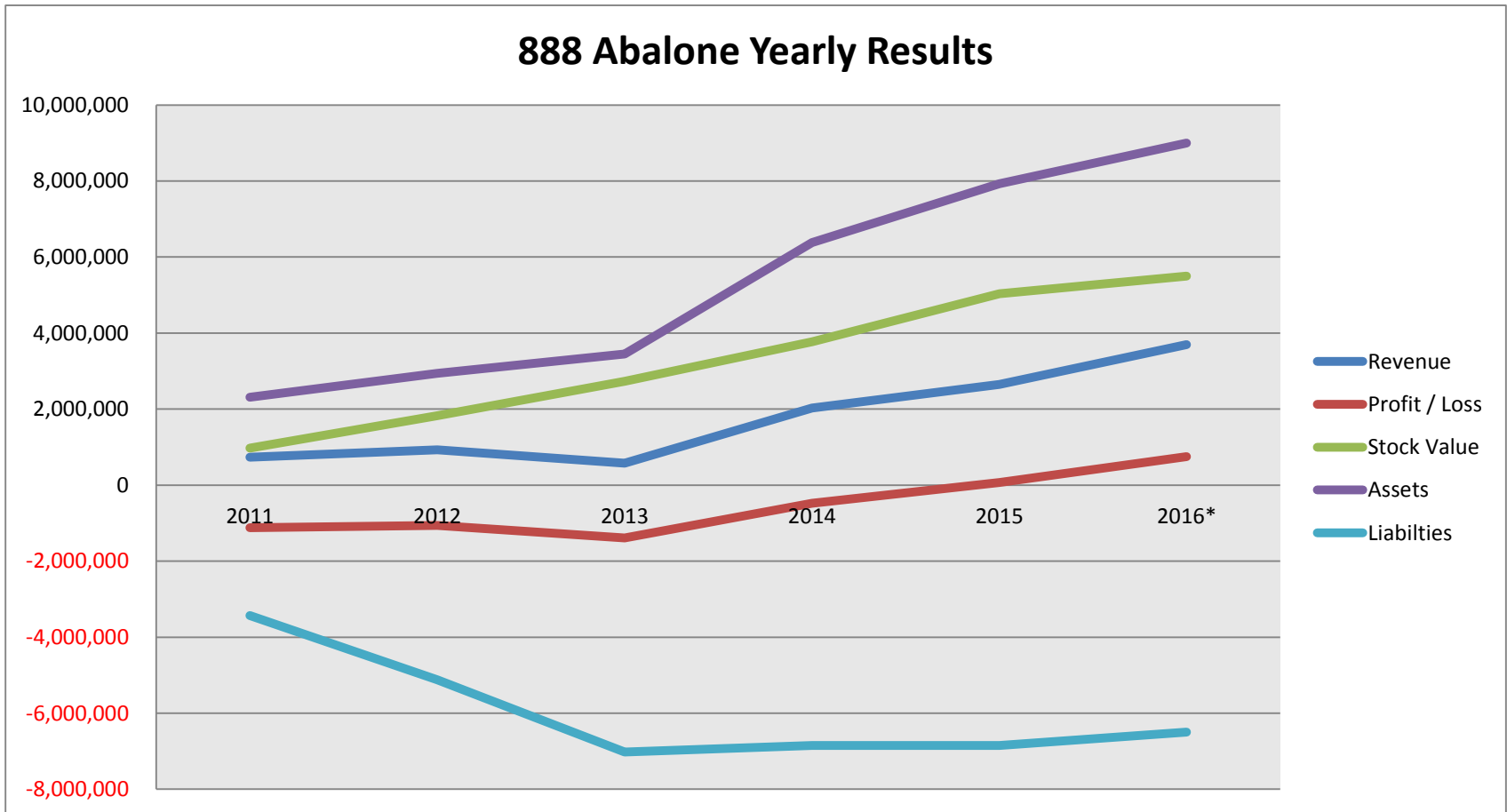
Bremer Bay - 2016

888 Abalone



- Incorporated in 2010, purchased farm assets off administrator.
- 3m spent over six years on capital improvements to reduce mortality, increase growth rates and provide efficiencies. Fixed the issues that caused farm to fail.
- 3m Abalone produced pa for grow-out and ranching. Staff increased from 8 to 15 equivalent full timers in six years.

888 Abalone



The Issues - 888



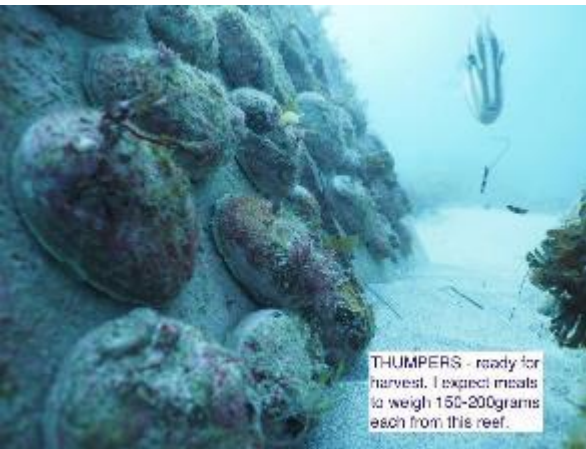
- Flood, Storms, Fire.
- Failed spawning's, machinery, power issues, capital delays.
- Cash Flow.

Ocean Grown Abalone



- OGA is the first abalone aquaculture venture to utilise the ocean floor with a bio-mimicry system.
- Incorporated in 2011 & completed 2 years of R&D trials in Augusta with different shaped modules.
- Raised 1.6m & 6m in extra capital to fund commercialisation in 2013-2015.

Ocean Grown Abalone



- Deployed 5000 blocks over 2 years. 50,000m² of surface area.
- Seeded 1.7M juvenile abalone since July 2014 & first commercial harvest will be July 2016.
- Forecast is for 100T/year production by 2018.

Ocean Grown Abalone



- No Feed inputs, Abalone eat the drift weed.
- 6 Divers are employed to tend Abalone daily plus seeding and harvesting.
- 40mm (10g) to 130mm (350g) in 3 years.

Commercial Results 2014-2016

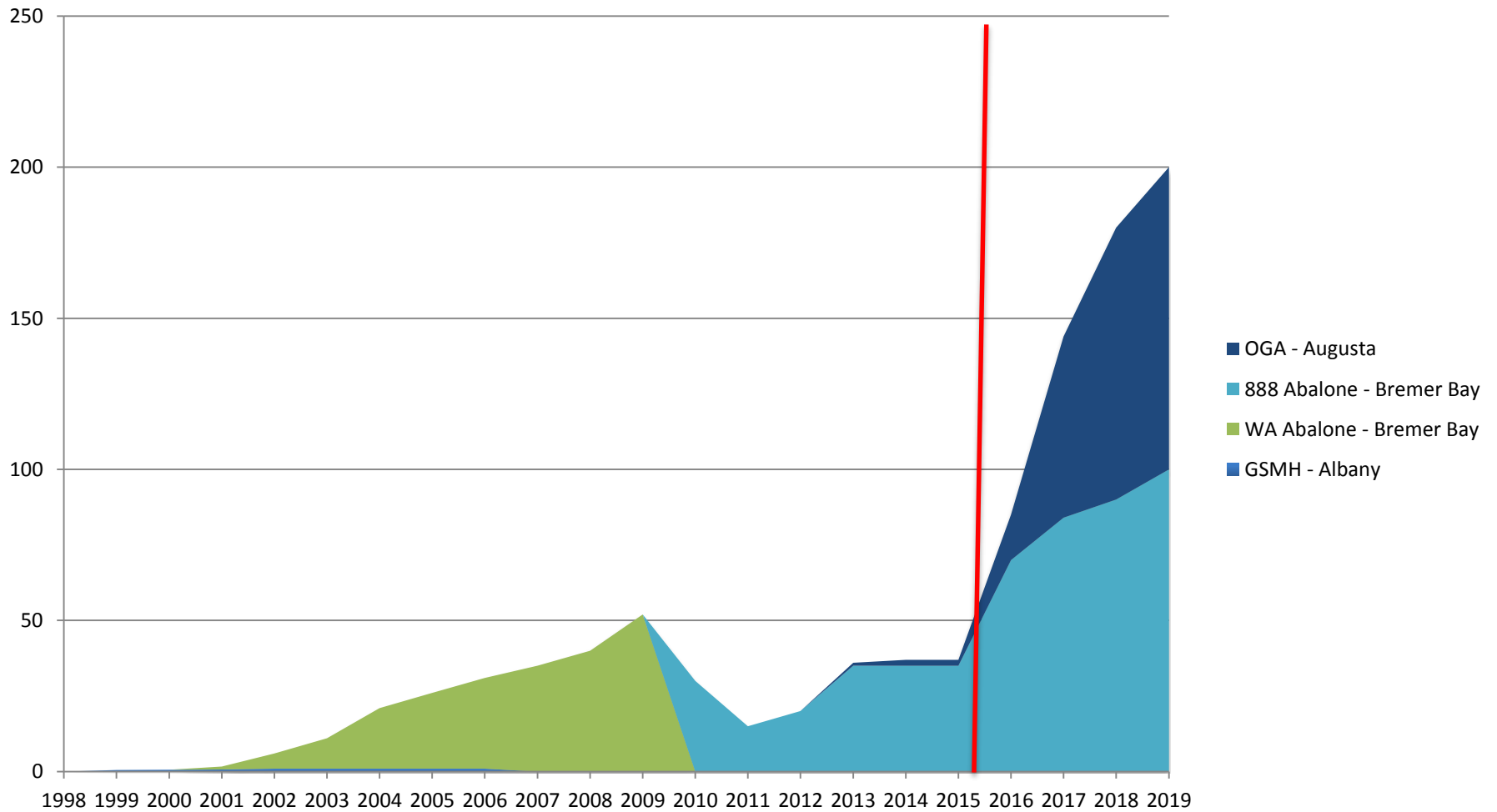
- Average Growth Rate – 30mm per 12 months average
- Average Survival = 67% (50% over 3 years)
- Biomass Increase
 - **3,741kg** of abalone were seeded onto OGA reefs in 2014. Another **10,500kg** seeded in 2015
 - March 2016 biomass on the reefs, after factoring in survival and growth is **44,366kg**.
- Another 1.1M abalone will be seeded in 2016.

The Issues - OGA

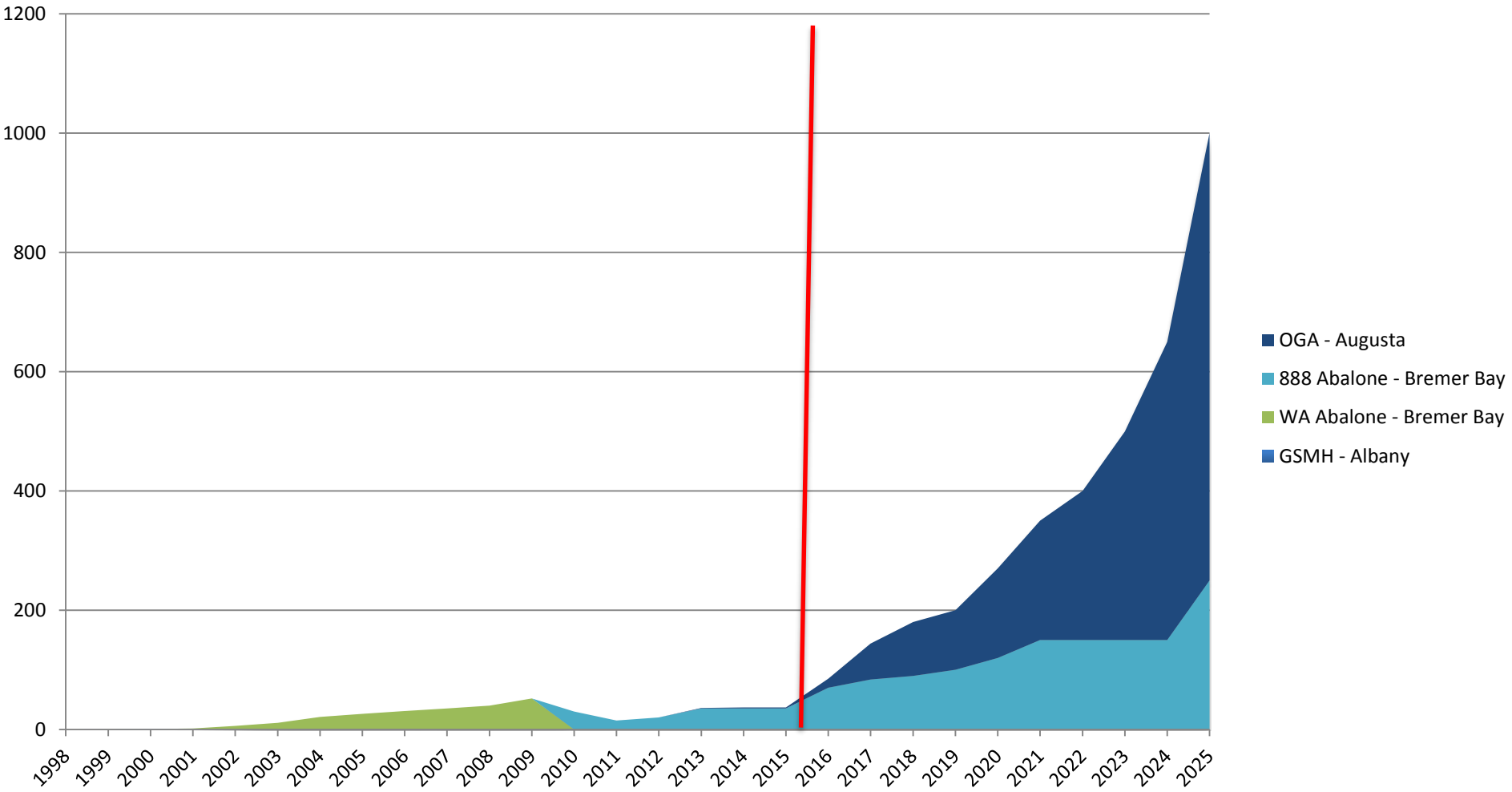


- Vessels breaking mooring's on 2 occasions.
- 3 year wait on extra leases to make it commercial viable.
- Cash Flow.

Production - Results



Production - Potential



Abalone Time?



Is it time for further expansion with
Abalone?

Thank you



Questions?