

Operational Structure

The Commission adopts a “one team” approach to delivering its strategic objectives. In 2015/16 a revised structure and operating model was developed to meet the priorities of the Pilbara Cities initiative and the Pilbara Blueprint, as well as the legislative objectives of the Commission.



Pilbara Development Commission staff

Vision

To be a progressive agency leading the development of the Pilbara.

Mission

To be the catalyst for regional growth and development in the Pilbara.

Organisational Values

The Commission is committed to achieving excellence in all it delivers. To achieve this, the Commission upholds four core values that promote a positive working environment and culture.

- Integrity: to act ethically, honestly and with transparency
- Unite: to connect, respect and collaborate
- Care: to be positive and supportive
- Impact: to make a difference

To enable the achievement of the Commission’s strategic goals, the organisation operates with three directorates.

Economic Development, Land and Infrastructure

Diversifying the region’s economic base remains a key strategic focus of the Commission with the aim of creating more jobs and investment opportunities. Core infrastructure and access to development-ready land also plays an important role by ensuring the Pilbara has the capacity for future planned growth. Through the priorities of the Pilbara Blueprint, the Commission aims

to place the region in the best possible position to capitalise on opportunities for expansion and attract new industries that will add to the Pilbara's powerhouse economy.

The focus areas of the Economic Development, Land and Infrastructure directorate are:

- land and infrastructure
- logistics, engineering and supply chains
- innovation and advanced technology
- small to medium enterprise
- agriculture
- aquaculture
- energy
- tourism

People, Place and Community

Building vibrant, liveable communities is a major part of the Pilbara Cities initiative which aims to attract and retain residents in Pilbara towns. Continuing to ensure communities have access to a high level of education, health and recreational facilities and services has also been identified as a priority in the Pilbara Blueprint. The People, Place and Community directorate identifies and supports projects that will transform the social outcomes of people living in the region, while also delivering economic benefits.

The focus areas of the People, Place and Community directorate are:

- education
- health
- people and communities
- arts and culture
- Regional Grants Scheme and Community Chest Fund

Business and Executive Services

Led by the Chief Executive Officer, the Business and Executive Services directorate supports the overall strategic direction and effective management of the Commission.

The focus areas of the Business and Executive Services directorate are:

- corporate communications
- governance
- finance
- human resources
- information technology
- administration

In addition to the three directorates, the Commission has identified a senior staff member as the key relationship manager for each of the four local Government areas in the Pilbara. This ensures the Commission is well informed of issues and priorities across the whole region.

Enabling Legislation

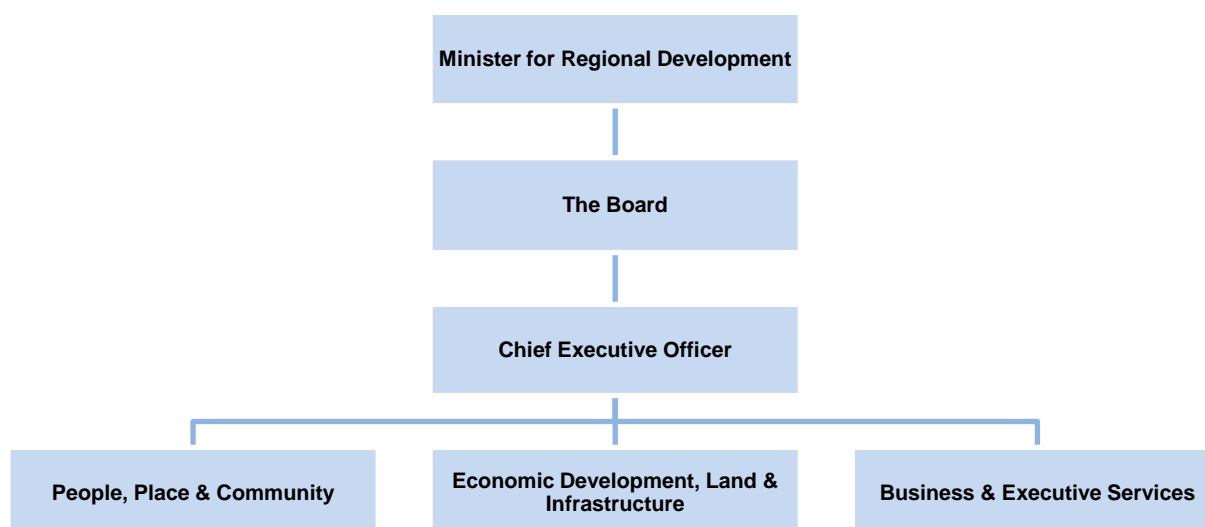
The Pilbara Development Commission was established under the *Regional Development Commissions Act 1993*, listed as a Statutory Authority on Schedule 1 of the *Financial Management Act 2006* and is subject to the provisions of the *Public Sector Management Act 1994*.

Responsible Minister

The Hon. Terry Redman MLA, Minister for Regional Development; Lands; Minister assisting the Minister for State Development.

Organisational Structure

Organisational Chart



Board of the Pilbara Development Commission

The Board is the governing body of the Commission and is responsible to the Minister for Regional Development for the efficient operation of the organisation.

The Commission's Board is comprised of nine members including community, local government and Ministerial appointments. The Chief Executive Officer is a member of the Board by virtue of office.

The following Board members' terms concluded during 2015/16:

- Cr Lynne Craigie
- Ms Gloria Jacob
- Cr Fiona White-Hartig
- Cr Robin Vandenberg

Current Board members



Mr Chris Gilmour JP (Chairman)

Mr Gilmour was appointed as Chairman of the Pilbara Development Commission on 13 October 2014 for a three year term. Mr Gilmour has previously held directorships at the Great Southern Development Commission and Cape Riche 1010 Committee, was Chairman of Wellstead Landcare Group, a Founding Director of the Rural Business Development Corporation, and is a graduate of the Australian Institute of Company Directors. In addition to his role with the Commission, he is also a Founding Member of Western Australian No-Till Farming Association and a Justice of the Peace.



Mr Chris Cottier (Deputy Chairman)

Mr Cottier has worked in various state and federal government roles across the South West, Kimberley and Pilbara and is currently BHP Billiton's Corporate Affairs Manager for the Pilbara. Mr Cottier is the current Chairperson of the North West Chamber of Minerals and Energy Committee and is an industry representative on the Hedland Senior High School Board.



Mr Terry Hill (Chief Executive Officer)

Mr Hill has held a number of senior roles in the Western Australian government, and at a national level. He has carried out the role as the Deputy Chair of the Grape and Wine Research and Development Corporation and was a foundation Director of Horticulture Australia Ltd. He has also worked internationally leading a significant project in Indonesia, industry trade missions to Asia and managing the commercialisation of intellectual property. Mr Hill holds a Bachelor of Science in Agriculture, a Masters in Agribusiness and is a Fellow of the Australian Institute of Company Directors.



Mr Chris Adams

Mr Adams has held senior executive and Chief Executive Officer roles within local government in Victoria and the Kimberley region of Western Australia, and is currently the CEO of the City of Karratha. Previously Mr Adams was the General Manager of the Pilbara Cities Office, where he was tasked with leading the WA State Government's planned transformation of the Pilbara region from major mining powerhouse to a sustainable, attractive, diverse – yet still economically strong – region.



Dr Alan Eggleston

Dr Eggleston moved to Port Hedland in 1974 establishing a private medical practice in South Hedland in 1976. Dr Eggleston was Mayor of Port Hedland before entering the Australian Senate in 1996 where he served three six-year terms. While in the Senate he participated in a number of Senate Committees and was a member of the Abbott government's Joint Select Committee on Northern Australia.



Mr Neil Hartley

Mr Hartley has more than 20 years of experience as a Chief Executive Officer and is currently the CEO of the Shire of Ashburton. Mr Hartley has been active in the peak officer body of local government, Local Government Managers Australia, for many years. He served for 17 years on its WA State Board, was its State President for two years in 2005 and 2006 and was its National President in 2008.



Mr Owen Hightower

Mr Hightower is an experienced town planner, and small business owner with experience in both regional and metropolitan local governments. Formerly the Vice President of the Port Hedland Chamber of Commerce, Mr Hightower is currently a member of the Regional Development Australia Pilbara committee, and Director of RFF Australia.



Cr Geraldine (Gerry) Parsons

Cr Parsons has resided in Newman since 2000 and has served as a Councillor for the Shire of East Pilbara since 2011. Cr Parsons currently sits on the Newman Chamber of Commerce and Industry, Newman Turf Club, Newman Recreation Centre Management Committee and is the secretary for the Catholic Church. She has been awarded Newman Volunteer of the Year, Newman International Women's Day recipient and is a Life Member of the Newman Tee Ball and Junior Soccer Associations.



Cr Jeton (Jay) Ahmedi JP

Cr Ahmedi was appointed as Shire of East Pilbara Councillor (South Ward) for a four year term and also serves as Vice Chairman for the Newman Senior High School Board. He is passionate about supporting his local community and plays an active role as Justice of the Peace, Secretary for the Fortescue Golf Club and holds various volunteer positions for local junior sporting associations.



Cr Julie Arif (nee Hunt)

Cr Arif is a long term Port Hedland resident and local historian with experience in local government and regional development. Cr Arif worked in education for 22 years and is an active member of the community. She is involved with Soroptimists International, the Port Hedland Historical Society and Care for Hedland Environmental Group.